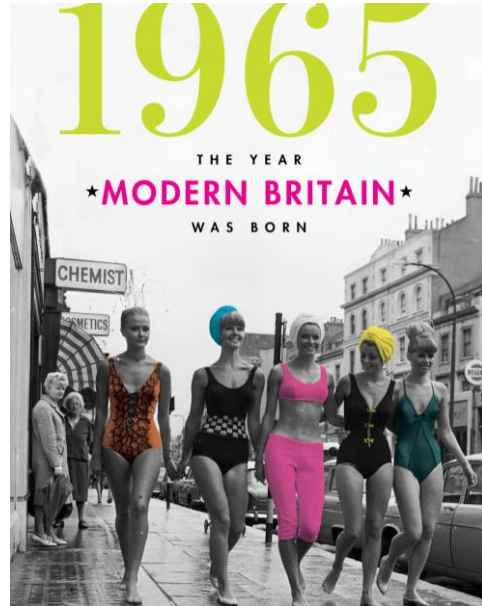


My life on our Planet



What does our Government think of our region

“The resources region of Australia, with a bloody good Beef show!”



What I heard from the PM

- Strength first, change later
- Don't change the economic model that is working well
- Support and nurture the industries that are balancing the budget
- Fund the future technologies to replace industries at an appropriate time
- Lead from economic strength over environmental necessity




Queensland's highest commodity region, the Fitzroy, is a vast and complex landscape.


Abundant and diverse in productive industry, this region is an economic powerhouse, contributing to livelihoods across the country.




3.2 million head of cattle (MLA, June 2018)



79% of the land in the region is managed by farmers and graziers (Department of Agriculture, 2020)



5 178 native species thrive in our region (Department of Environment and Science, May 2021)



224 rare and threatened species (Department of Environment and Science, May 2021)



8,534 wetlands, that's 1/3 of QLD wetlands (Department of Environment and Science, May 2021)



373 marine islands (State of Queensland (Department of Resources, 2014)



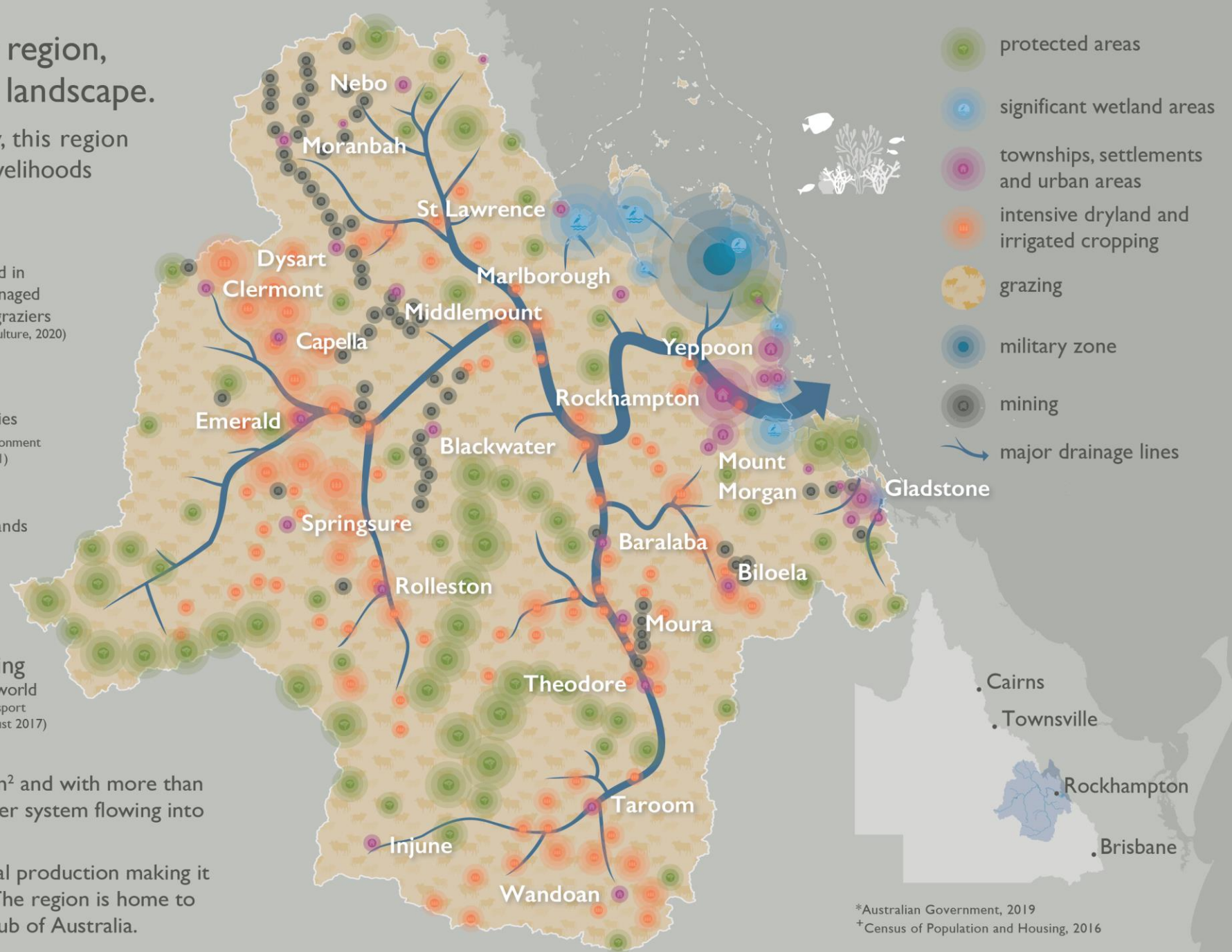
77% of QLD active coal mines (State of Queensland (Department of Resources, 2020)



Home to one of the largest coal exporting terminals in the world (Department of Transport and Main Roads, August 2017)

The Fitzroy region has a footprint of over 156,000km² and with more than 20,000km of waterways, the Fitzroy is the largest river system flowing into the waters of the iconic Great Barrier Reef.

Almost 80% of the Fitzroy region is under agricultural production making it the largest cattle producing region in the country*. The region is home to over 235,000+ people and is the mineral resources hub of Australia.

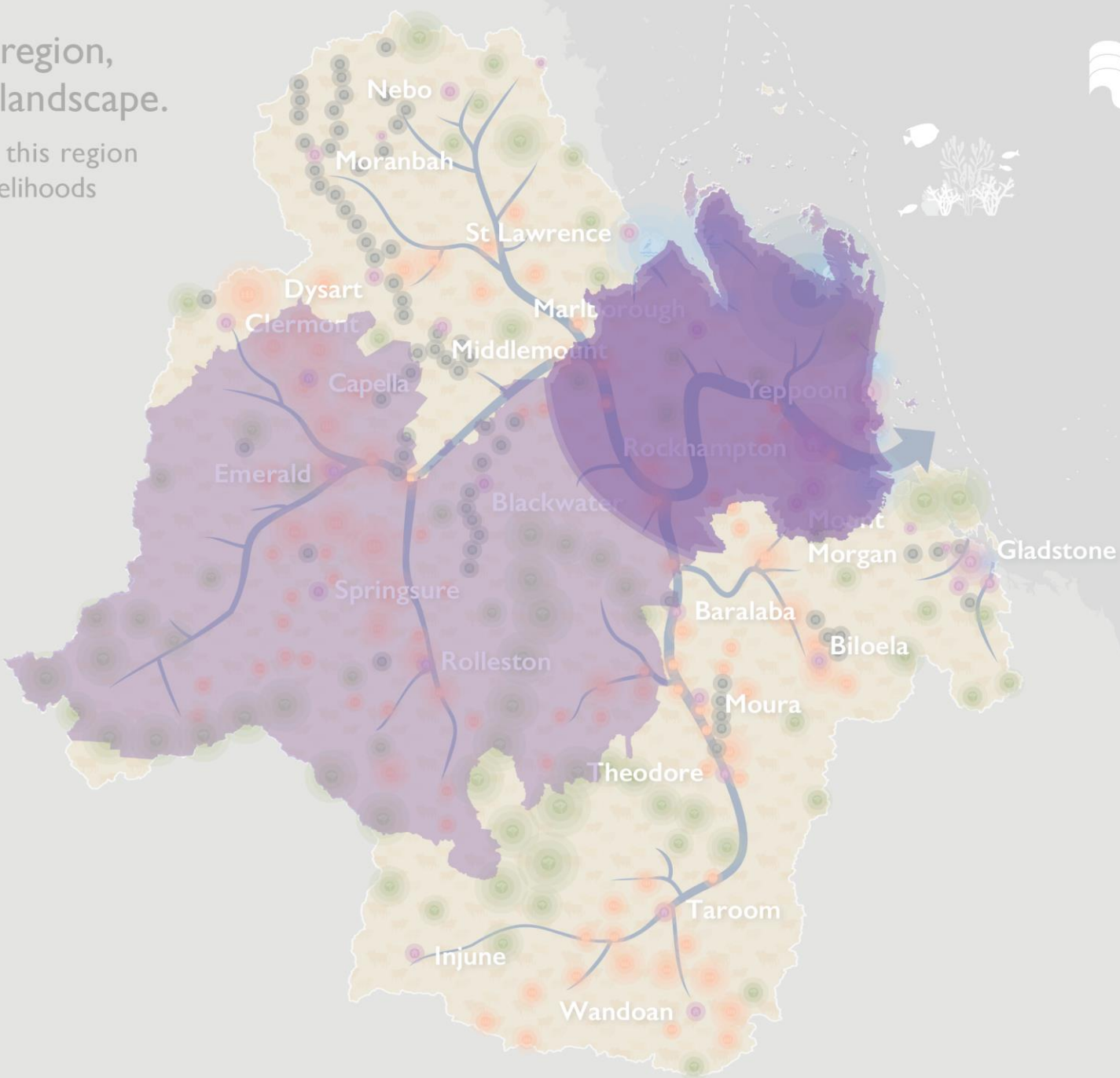


*Australian Government, 2019
 †Census of Population and Housing, 2016

Queensland's highest commodity region, the Fitzroy, is a vast and complex landscape.

Abundant and diverse in productive industry, this region is an economic powerhouse, contributing to livelihoods across the country.

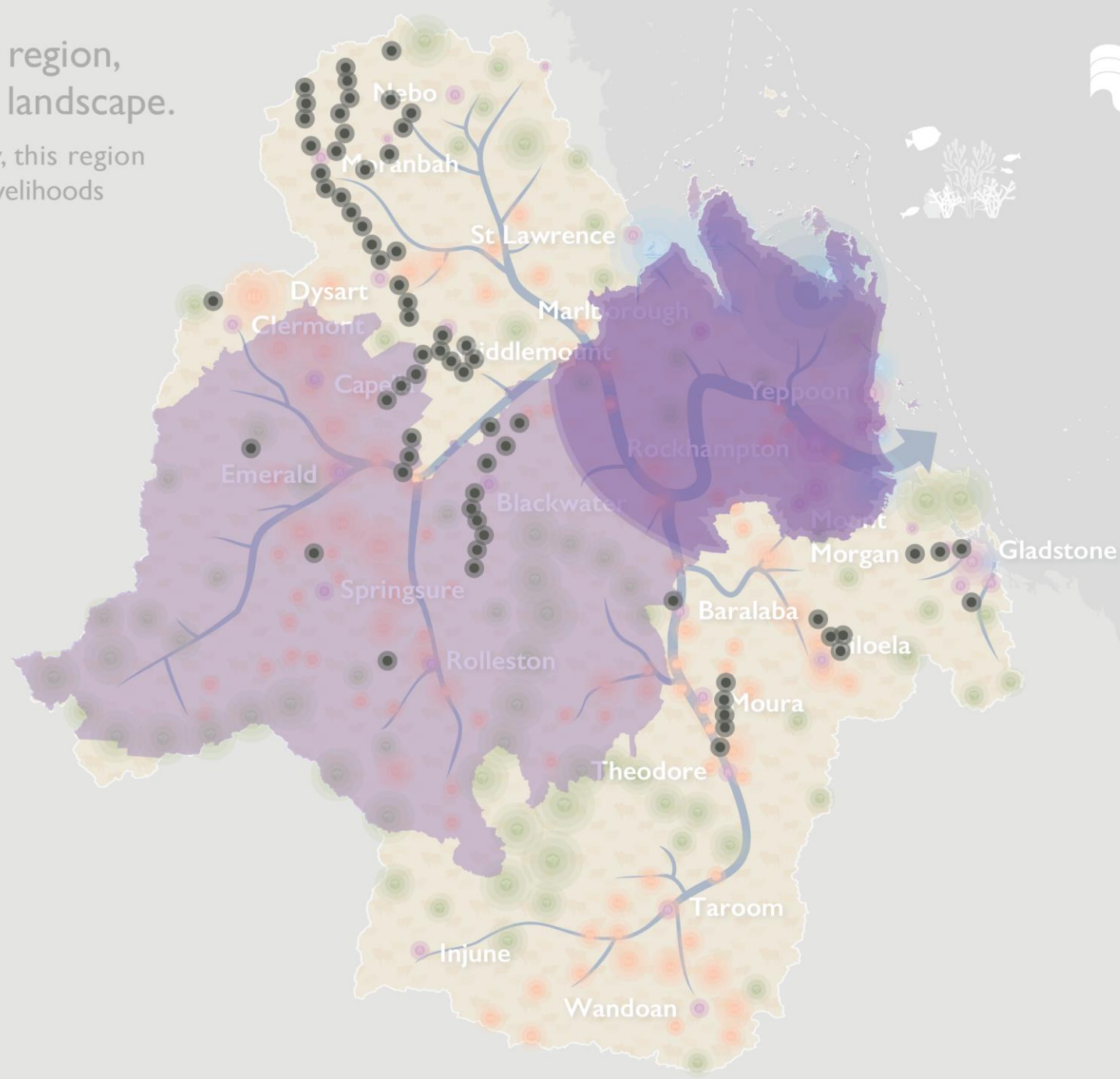
 **Capricorn Enterprise**



Queensland's highest commodity region, the Fitzroy, is a vast and complex landscape.

Abundant and diverse in productive industry, this region is an economic powerhouse, contributing to livelihoods across the country.

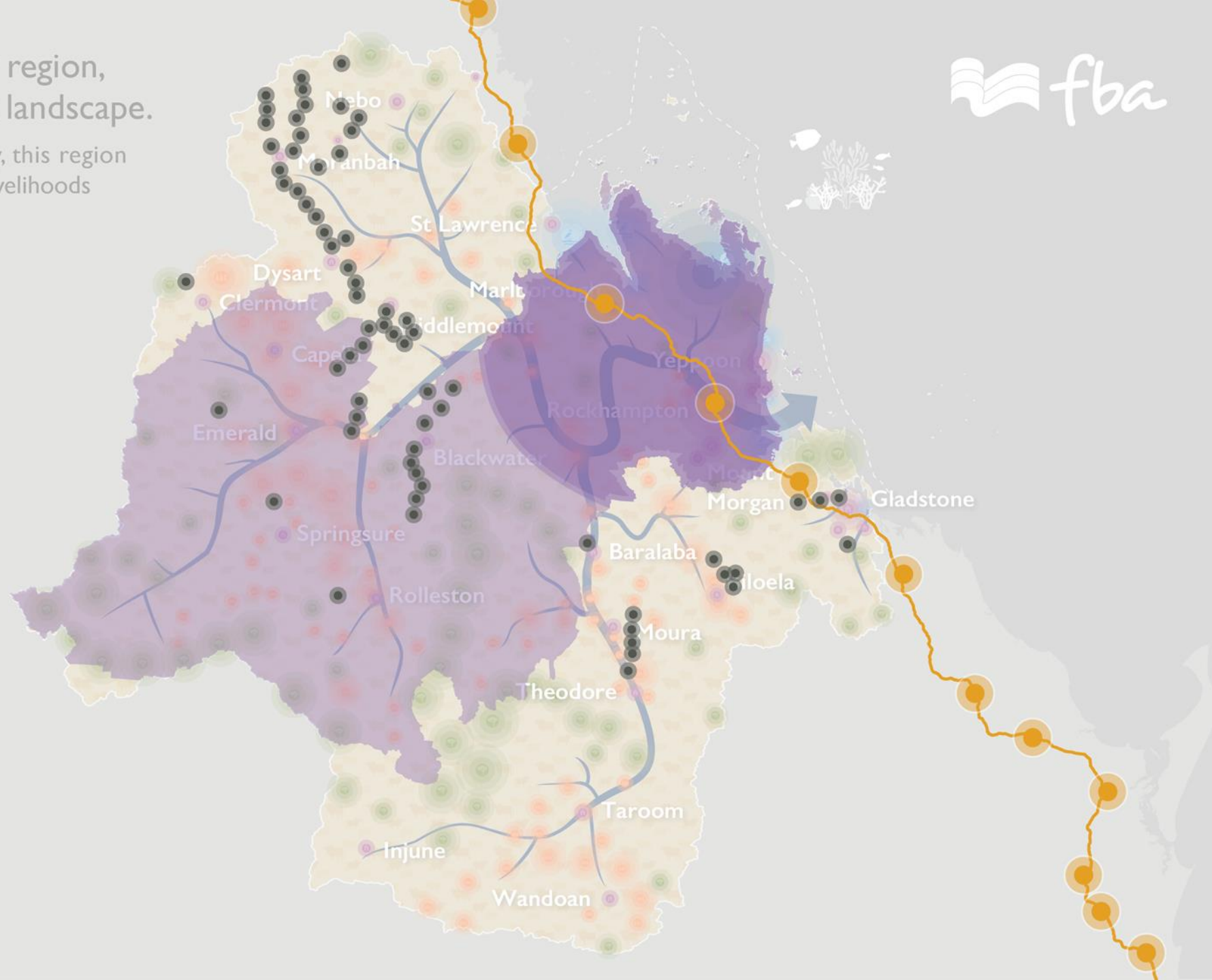
-  Capricorn Enterprise
-  Queensland Resources Council



Queensland's highest commodity region, the Fitzroy, is a vast and complex landscape.

Abundant and diverse in productive industry, this region is an economic powerhouse, contributing to livelihoods across the country.

-  Capricorn Enterprise
-  Queensland Resources Council
-  Yurika
Part of Energy Queensland




Queensland's highest commodity region, the Fitzroy, is a vast and complex landscape.

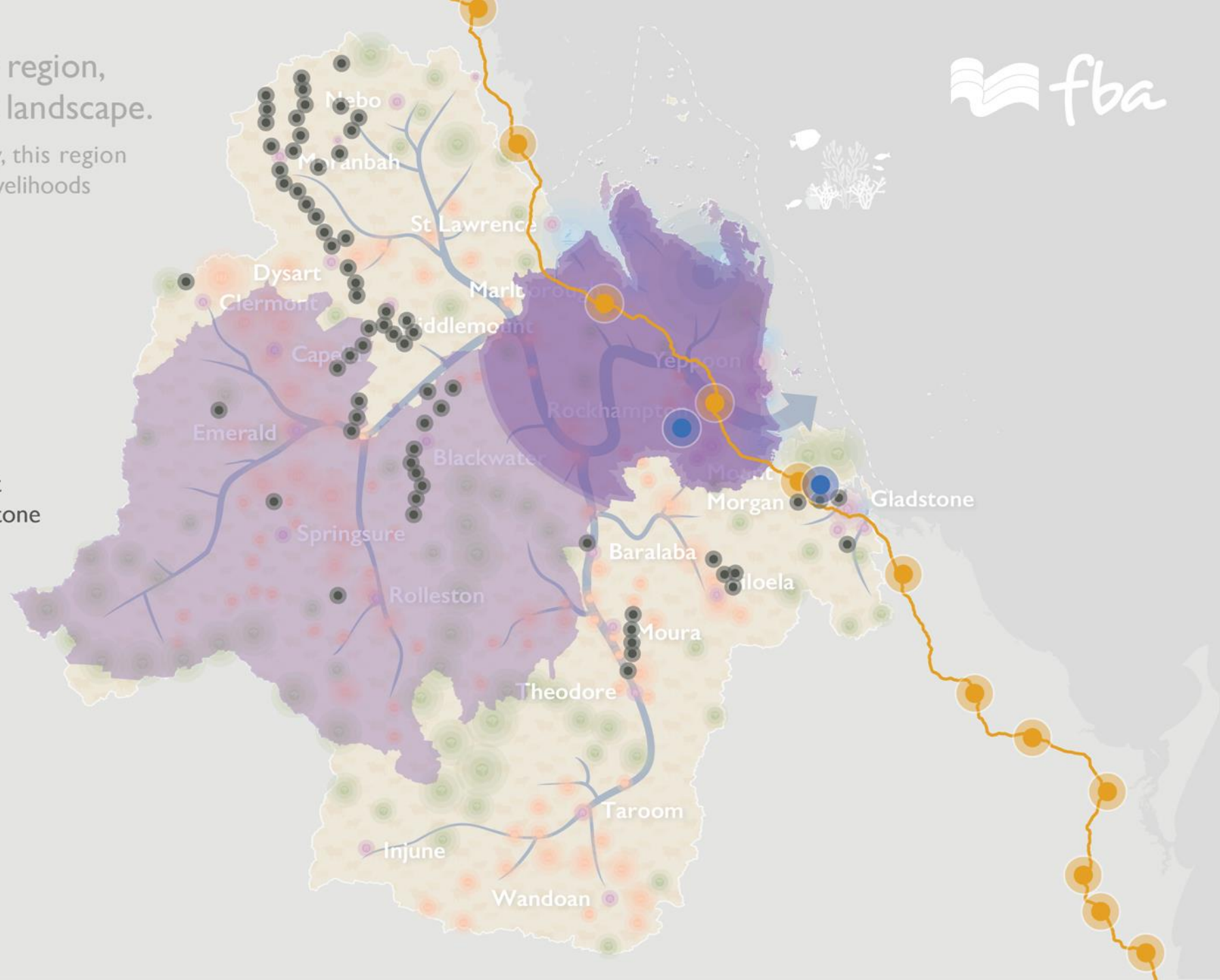
Abundant and diverse in productive industry, this region is an economic powerhouse, contributing to livelihoods across the country.

 **Capricorn Enterprise**

 **Queensland Resources Council**






 **Yurika**
Part of Energy Queensland

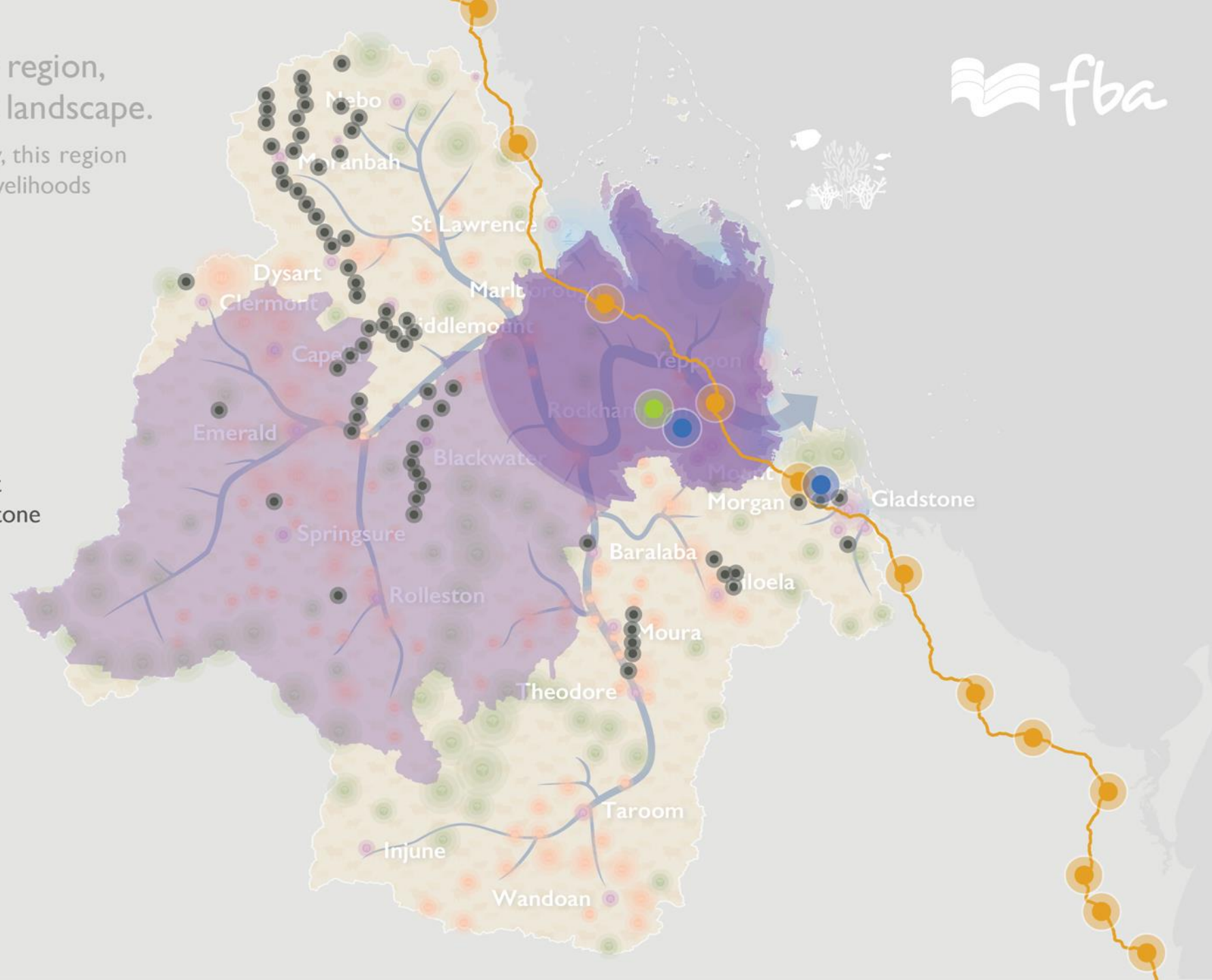
 **Stanwell Corp**
Stanwell power station hydrogen project
Renewable hydrogen project near Gladstone



Queensland's highest commodity region, the Fitzroy, is a vast and complex landscape.

Abundant and diverse in productive industry, this region is an economic powerhouse, contributing to livelihoods across the country.

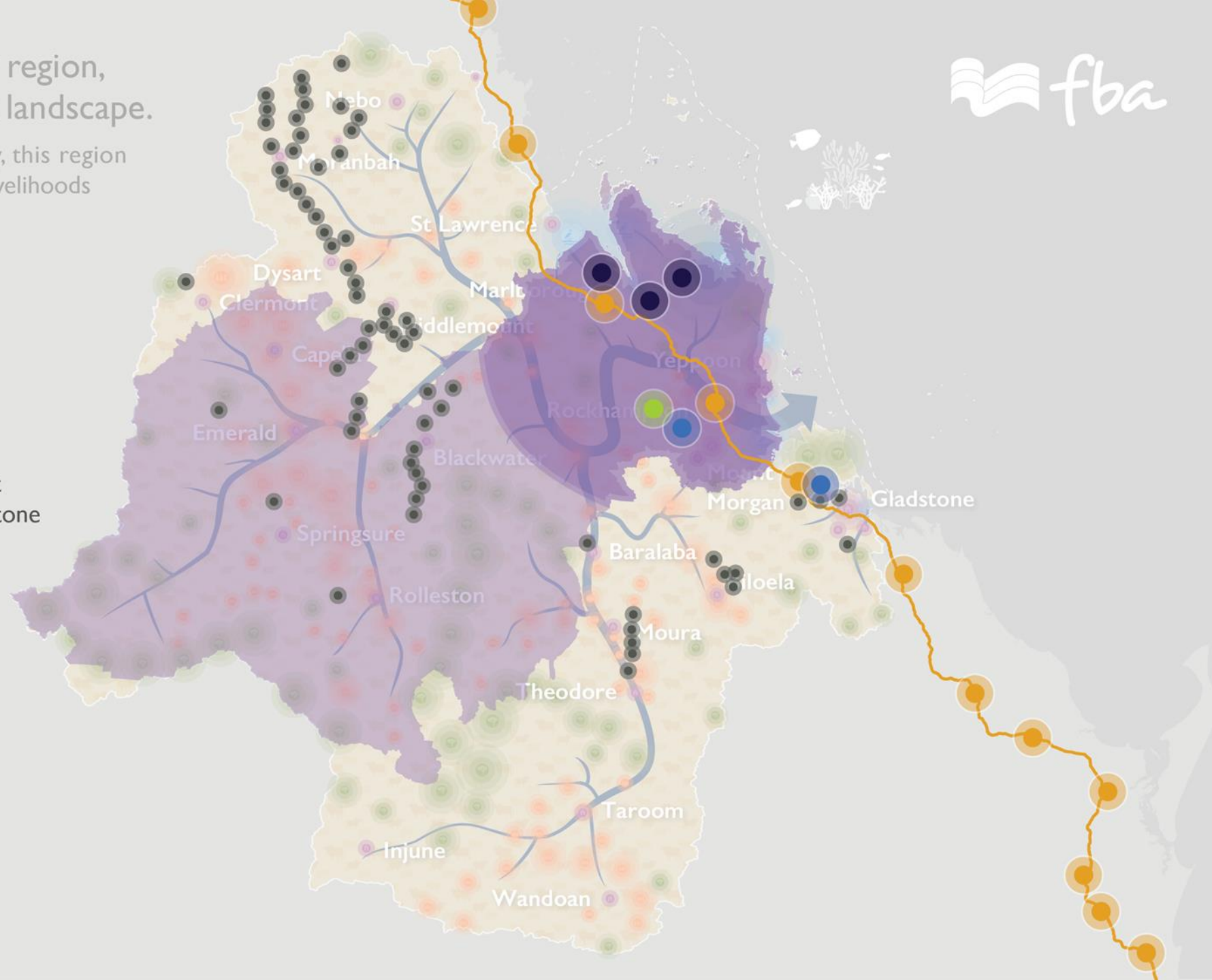
-  **Capricorn Enterprise**
-  **Queensland Resources Council**
-  **Yurika**
Part of Energy Queensland
-  **Stanwell Corp**
Stanwell power station hydrogen project
Renewable hydrogen project near Gladstone
-  **Energy Estate**
Moah Creek project



Queensland's highest commodity region, the Fitzroy, is a vast and complex landscape.

Abundant and diverse in productive industry, this region is an economic powerhouse, contributing to livelihoods across the country.

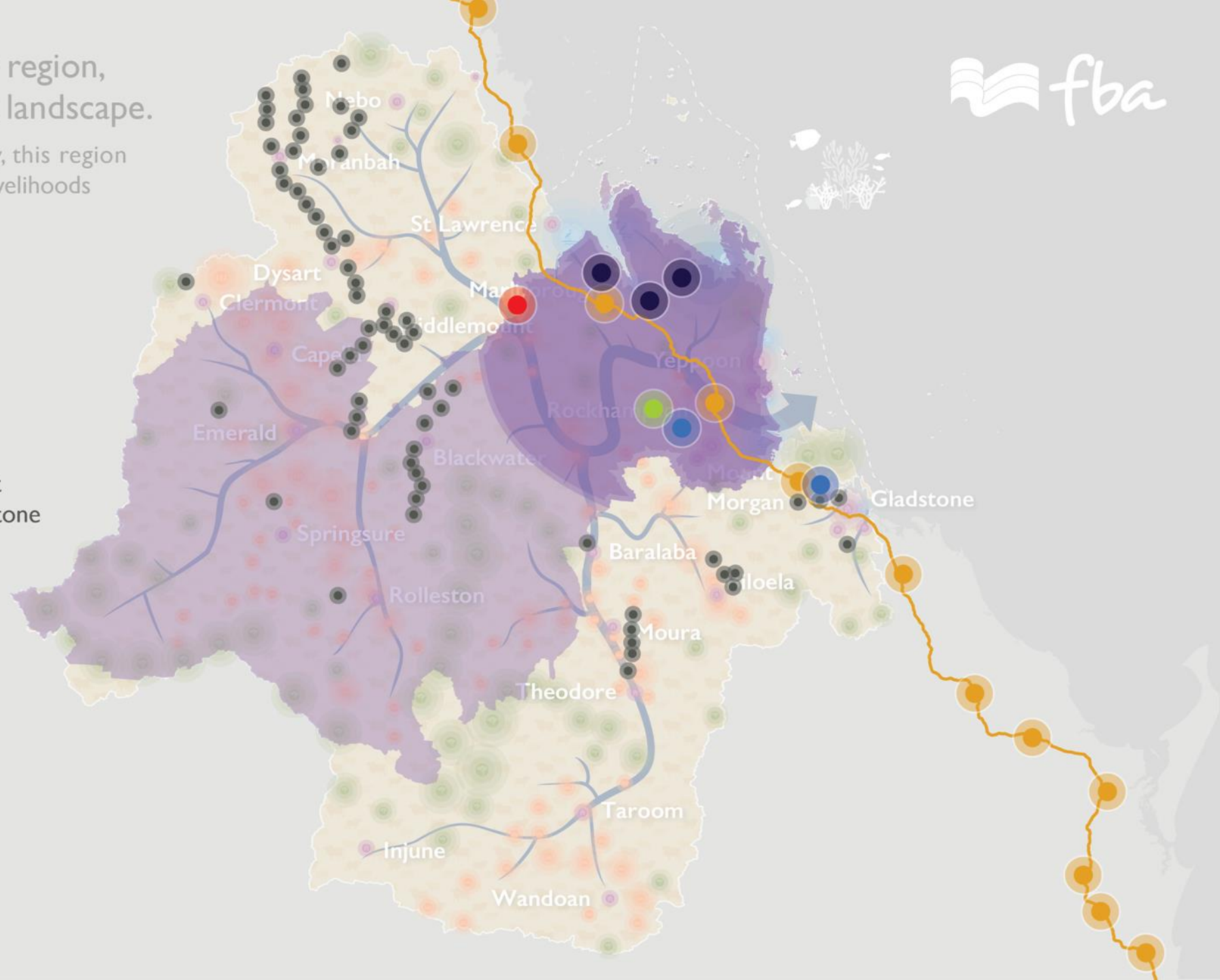
-  **Capricorn Enterprise**
-  **Queensland Resources Council**
-  **Yurika**
Part of Energy Queensland
-  **Stanwell Corp**
Stanwell power station hydrogen project
Renewable hydrogen project near Gladstone
-  **Energy Estate**
Moah Creek project
-  **ASMTI**



Queensland's highest commodity region, the Fitzroy, is a vast and complex landscape.

Abundant and diverse in productive industry, this region is an economic powerhouse, contributing to livelihoods across the country.

-  **Capricorn Enterprise**
-  **Queensland Resources Council**
-  **Yurika**
Part of Energy Queensland
-  **Stanwell Corp**
Stanwell power station hydrogen project
Renewable hydrogen project near Gladstone
-  **Energy Estate**
Moah Creek project
-  **ASMTI**
-  **Goldwind Australia**
Clarke Creek project

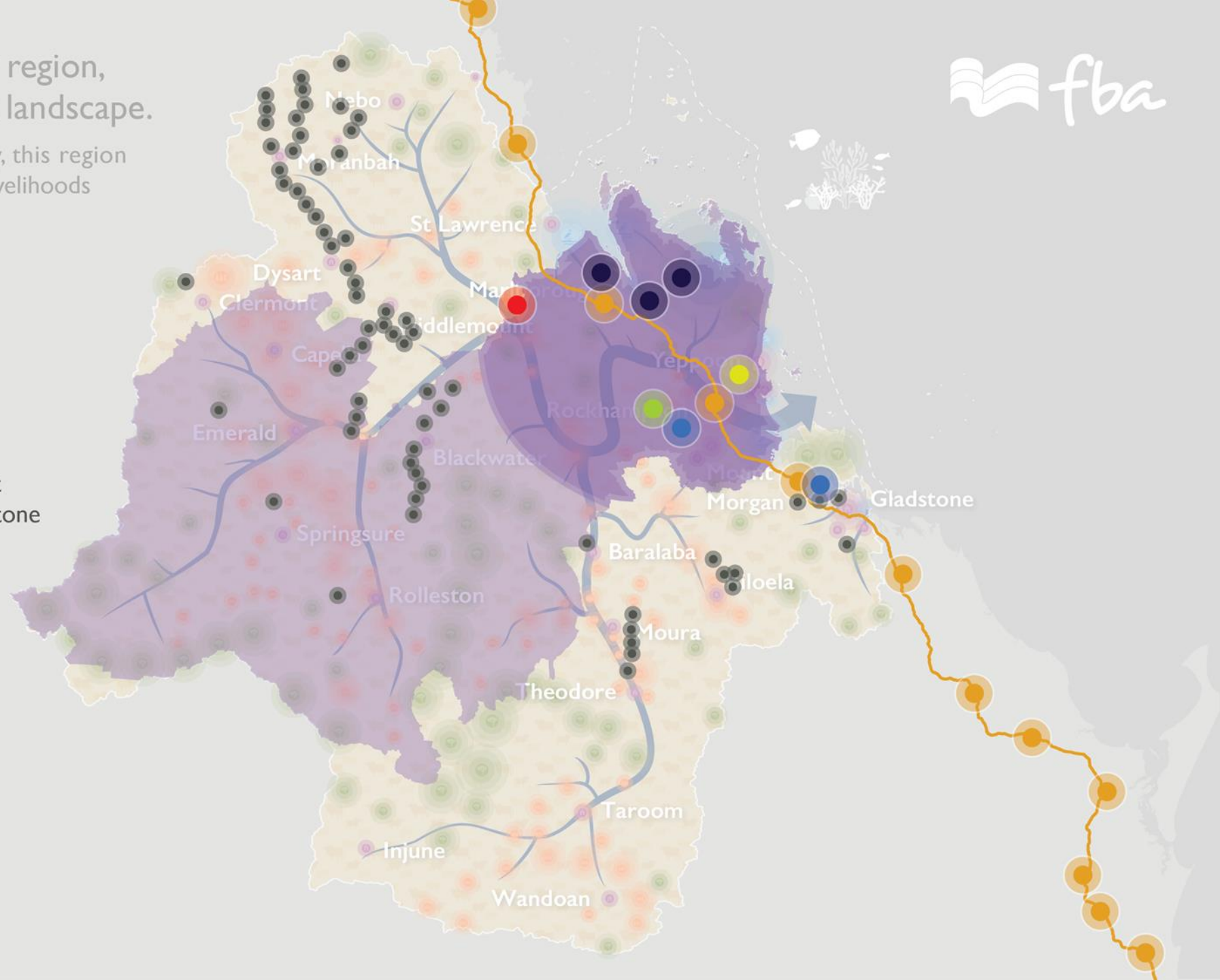


Queensland's highest commodity region, the Fitzroy, is a vast and complex landscape.

Abundant and diverse in productive industry, this region is an economic powerhouse, contributing to livelihoods across the country.



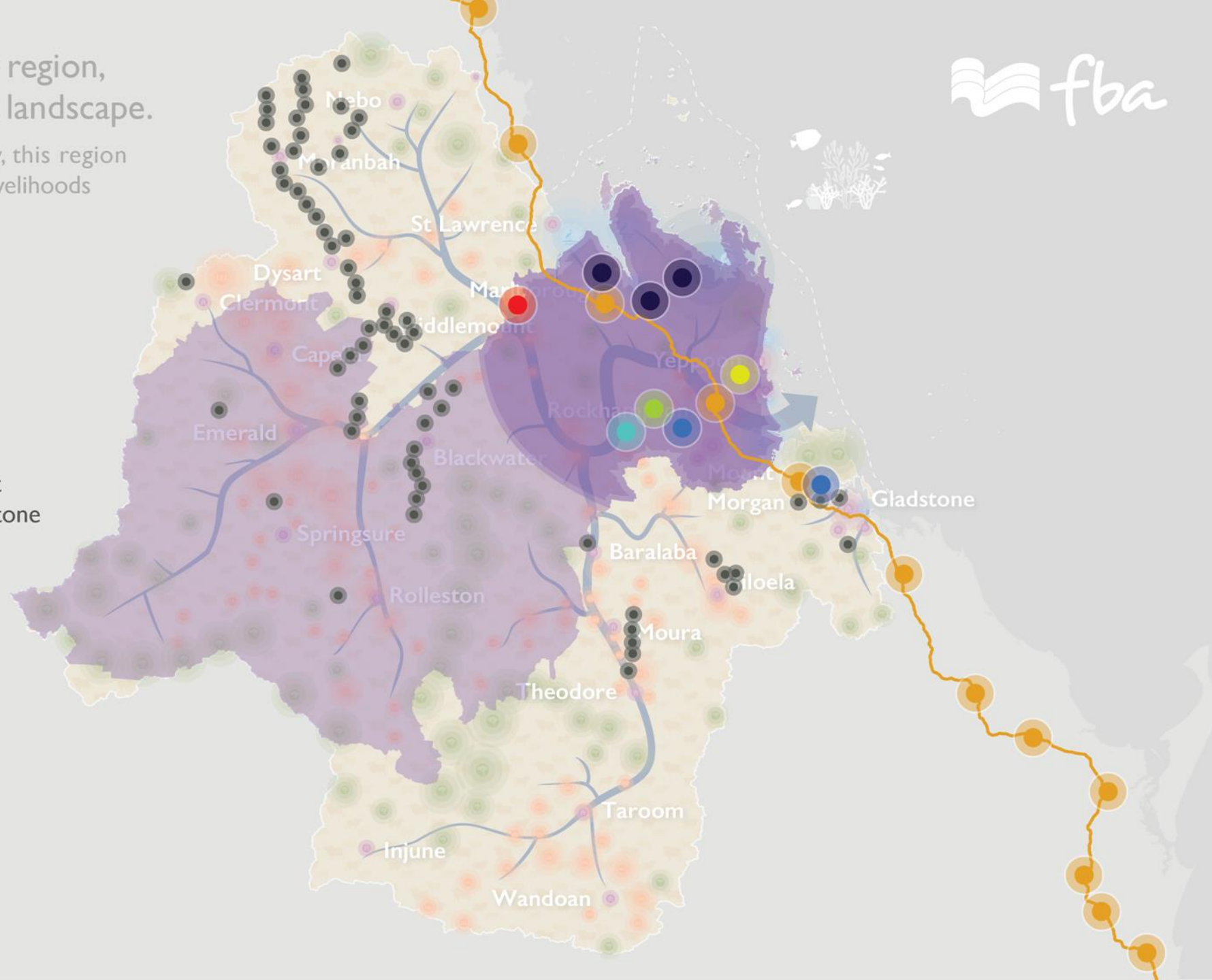
-  Capricorn Enterprise
-  Queensland Resources Council
-  Yurika
Part of Energy Queensland
-  Stanwell Corp
Stanwell power station hydrogen project
Renewable hydrogen project near Gladstone
-  Energy Estate
Moah Creek project
-  ASMTI
-  Goldwind Australia
Clarke Creek project
-  Surf Lakes



Queensland's highest commodity region, the Fitzroy, is a vast and complex landscape.

Abundant and diverse in productive industry, this region is an economic powerhouse, contributing to livelihoods across the country.

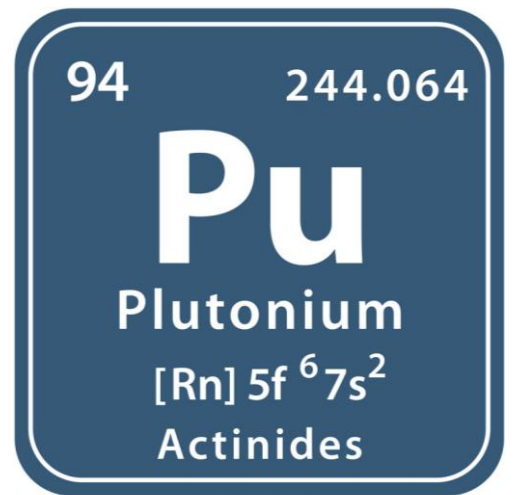
-  **Capricorn Enterprise**
-  **Queensland Resources Council**
-  **Yurika**
Part of Energy Queensland
-  **Stanwell Corp**
Stanwell power station hydrogen project
Renewable hydrogen project near Gladstone
-  **Energy Estate**
Moah Creek project
-  **ASMTI**
-  **Goldwind Australia**
Clarke Creek project
-  **Surf Lakes**
-  **SunWater**
Rookwood Weir



Looking to another for Inspiration...



“Our Greatest Opportunity” – Sir David Attenborough



The Anthropocene – the beginning or the end?

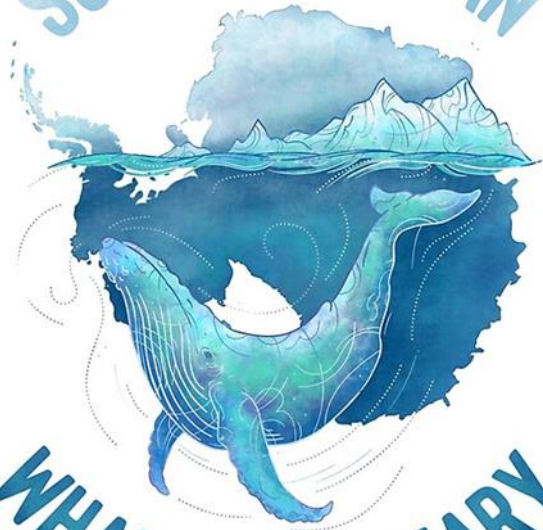


m
for previewing purposes only.

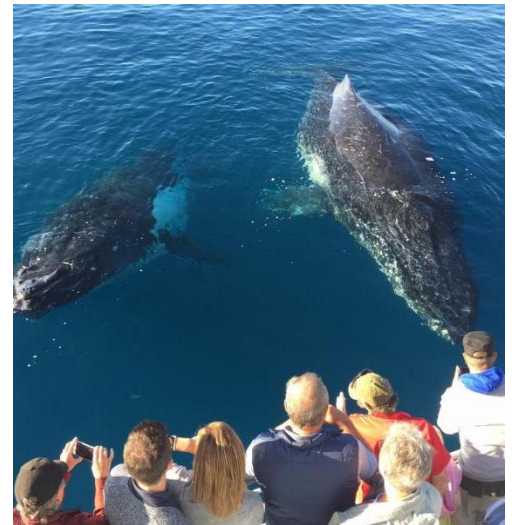
Precedent for Change

When we collaborate we evolve

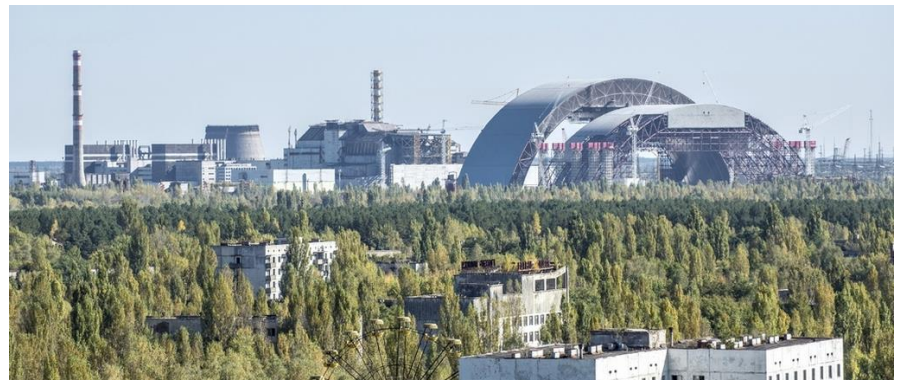
SOUTHERN OCEAN



WHALE SANCTUARY



The Future of Humanity



Homo Sapiens, *the wise human being*

